

Gas Data Model v2.2 - Technical Specification - September 2022

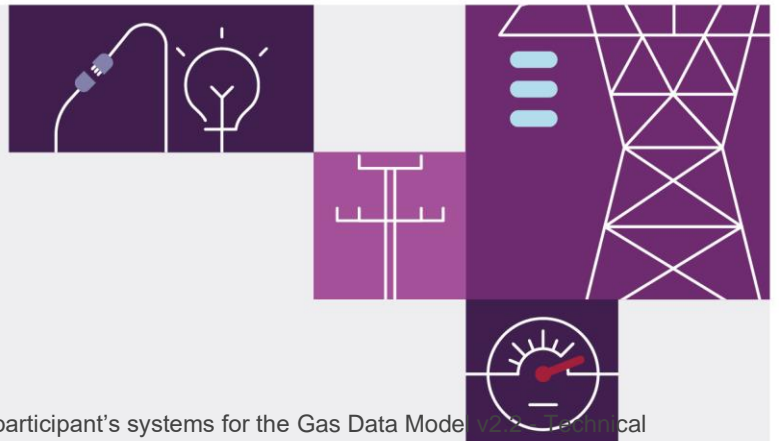
0.07 September 2022

Pre-production: Wednesday 14
September 2022

Production: Wednesday 5
October 2022

Release series: GDMSEP2022





Important notice

Purpose & audience

This document describes the technical changes required to participant's systems for the Gas Data Model v2.2 - Technical Specification - September 2022 (Release). The Australian Energy Market Operator (AEMO) provides this information as a service targeting business analysts and IT staff in participant organisations. It provides guidance about the changes to their market systems under the National Gas Rules (Rules), as at the date of publication.

How to use this document

- If you have questions about the business aspects of these changes, please see Consultations on AEMO's website.
- The references listed throughout this document are primary resources and take precedence over this document.
- Unless otherwise stated, you can find resources mentioned in this guide on AEMO's website.
- **Text in this format** is a link to related information.
- **Text in this format**, indicates a reference to a document on AEMO's website.
- **Text in this format** is an action to perform in the Markets Portal.
- This document is written in plain language for easy reading. Where there is a discrepancy between the Rules and information or a term in this document, the Rules take precedence.
- Glossary Terms are capitalised and have the meanings listed against them in the Glossary.
- Rules Terms have the meaning listed against them in the **National Gas Rules** (Rules).

Privacy and legal notices

The material in this publication may be used in accordance with the [privacy and legal notices](#) on AEMO's website.

Trademark notices

Microsoft, Windows, and SQL Server are either registered trademarks or trademarks of Microsoft Corporation in the United States and/or other countries.

Oracle and Java are registered trademarks of Oracle and/or its affiliates.

UNIX is a registered trademark of The Open Group in the US and other countries.

© 2015 Google Inc, used with permission. Google and the Google logo are registered trademarks of Google Inc.

Postman

Distribution

Available to the public.

Document identification

Prepared by: AEMO Digital

Last update: Tuesday, 20 September 2022 9:45 AM

Version History

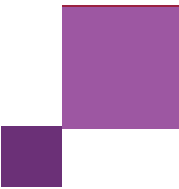
0.07 See [Changes in this version](#).

Documents made obsolete

The release of this document changes only the version of Gas Data Model v2.2 - Technical Specification - September 2022.

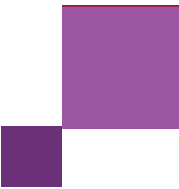
Support hub

To contact AEMO's Support Hub use Contact Us on AEMO's website or for urgent matters phone: 1300 AEMO 00 (1300 236 600).



Contents

1	Introduction.....	5
1.1	Audience	5
1.2	Objective	5
1.3	Status.....	5
1.4	Release dates	5
1.5	Version numbers.....	5
1.6	Changes in this version.....	6
1.7	Related technical specifications	6
1.8	Procedure changes	6
1.9	Related documents.....	6
1.10	Approval to change.....	7
1.11	Market systems user group meetings.....	7
1.12	Projects.....	7
2	Proposed Timeline	8
3	Participant Impact	10
3.1	Data Model packages.....	10
3.2	Data Subscription	10
4	Gas Transparency Measures	11
4.1	Goal.....	11
4.2	High-level changes	11
4.3	Rule and procedure changes	12
4.4	Related resources	12
5	Gas Data Model v2.2.....	14
5.1	Data Model changes summary.....	14
5.2	Package: GAS_SUPPLY_HUB	16
5.3	Package: GAS_BB.....	19
5.4	File interface changes	47
5.5	Participant interfaces changes.....	51
5.6	Discontinued reports	53
5.7	Non-functional changes	53



6	FAQs	54
7	Implementation	55
7.1	Transition	55
7.2	Upgrading	55
7.3	Implications	55
7.4	Risks	55
8	Terms	56
8.1	Rule terms	56
8.2	Glossary	56
9	References	58
9.1	GSH.....	58
9.2	Prudentials	58
9.3	Data interchange and data model resources.....	58
10	Index	60

1 Introduction

1.1 Audience

The primary audience is Registered Participant:

- Business analysts and IT teams.
- Implementers and maintainers of Gas Data Model and Data Interchange environments.

1.2 Objective

The Gas Data Model v2.2 - Technical Specification - September 2022 (Release) describes the changes to the Gas Data Model.

1.3 Status

Version	Status
0.07	<p>This technical specification is for participant information only. The design is in progress and may change as the technical requirements are streamlined.</p> <p>Please provide feedback to AEMO's Support Hub.</p>

1.4 Release dates

Scheduled for implementation in:

- Pre-production: Wednesday 14 September 2022
- Production: Wednesday 5 October 2022

1.5 Version numbers

AEMO releases new versions of this document as the technical requirements are streamlined.

Incremental version numbers such as 1.01, 2.01 and so on mean there is a minor change to the technical specification.

Major version numbers such as 1.00, 2.00 means there are substantial changes to the technical specification. Participants must carefully review these changes, detailed on page 6.

1.6 Changes in this version

Updates in this version:

- Updates the File interface changes and Participant interfaces changes tables to include GBB tables.
- Adds trigger for GAS_GSH_TRADES table.

1.7 Related technical specifications

Name	Description
GSH Technical Specification – July 2022	Describes the GSH Futures Submission project

1.8 Procedure changes

None for Data Interchange or Data Model.

1.9 Related documents

Once published, these resources take precedence over this technical specification.

These guides and resources are updated according to this technical specification and published for the pre-production Release Date.

Title	Description	Status
Gas Upgrade Report v2.2	Explains the changes in the Gas Data Model	Completed. Available in preproduction.
Gas Data Model Report v2.2	Explains all Gas Data Model tables	Completed. Available in preproduction.
Gas Package Summary v2.2	Explains the Gas Data Model packages and associated tables	Completed. Available in preproduction.
Gas Table to File Report v2.2	Explains the Gas Data Model packages, reports, tables, file IDs, and versions contained in each file name	Completed. Available from Data Subscription menu in the Markets Portal.
Data Interchange Online Help	Data Interchange and Data Model resources	Completed. Available in preproduction.

1.10 Approval to change

AEMO request approval to proceed from all participant change controllers by close of business Wednesday, 14 September 2022

1.11 Market systems user group meetings

The Market Systems User Group (MSUG) is an industry user group established to discuss wholesale and retail IT systems releases. Its purpose is to facilitate the continuing improvement of AEMO's IT systems by seeking feedback and collaboration from participants.

MSUG meetings are open to all interested parties, with invitations sent to all included on the distribution list. If you have a technical question for a project and want to attend the MSUG ask your company's support team to include your email address in their **AEMO Help Desk Bulletin (CRM)** distribution list.

1.12 Projects

Projects in this Release include:

1. EFP Trade Submissions
2. Gas Transparency Measures

2 Proposed Timeline

The dates for the Market System User Group Meetings (MSUG) are tentative. We will provide an invitation one week prior to the meeting.

Milestone	Date	Description
Approval required	Wednesday, 14 September 2022	Final date for participant approval of this Release
Revised Technical Specification	June 2022	<p>AEMO releases new versions of this document as the technical requirements are streamlined. During the project this document is the source of truth.</p> <p>From the pre-production release, the technical specification is no longer updated, the guides and related documents become the source of truth, see Error! Reference source not found. Error! Bookmark not defined..</p> <p>Release schedules and technical specifications</p>
MSUG pre-release review	Wednesday 31 August 2022	Market systems user group meeting to discuss this technical specification
MSUG meeting: pre-production review	Wednesday 28 September 2022	Market systems user group meeting to discuss the pre-production release
Pre-production refresh	Feb 24, 2022 - Mar 10, 2022 Refreshed from production data Feb 21, 2022	Refresh of the pre-production system with data refreshed from the production system. An outage of up to five days can occur to the pre-production environment during this period. Participant access is not restricted, however, AEMO do not guarantee the pre-production data content or system availability. During the refresh, access to other AEMO systems such as AWEFS, EMMS, OPDMS, and STTM may be intermittently affected
Pre-production implementation	Wednesday 14 September 2022	<p>AEMO implements components of the Release to pre-production for participant testing</p> <p>AEMO has full access to the system during this period</p> <p>Participant access is not restricted; however, the data content or system availability is not guaranteed</p>
Pre-production Data Model file subscription change	Wednesday 14 September 2022	<p>There is no auto-subscription for existing files. AEMO moves participants to the Legacy version of files. Participants must subscribe to the new version.</p> <p>For more details, see Participant Impact</p>
Pre-production pdrConfig release	Wednesday 14 September 2022	<p>The pdrConfig contains the latest report versions to load into your DI environments</p> <p>For more details, see Participant Impact</p>
Pre-production available	Wednesday 14 September 2022	Testing period begins for participants

Proposed Timeline

Milestone	Date	Description
Participant testing	Wednesday 14 September 2022 – Wednesday 5 October 2022	Unstructured/bilateral participant testing in the pre-production environment
MSUG meeting: post pre-production review	Wednesday 13 April 2022	Market systems user group meeting to review the implementation of this pre-production release
Production implementation	Wednesday 5 October 2022	AEMO implements the release to production
Production Data Model file subscription change	Wednesday 5 October 2022	There is no auto-subscription for existing files. AEMO moves participants to the Legacy version of files. Participants must subscribe to the new version For more details, see Participant Impact
Production pdrConfig release	Wednesday 5 October 2022	The pdrConfig contains the latest report versions to load into your DI environments. For more details, see Participant Impact
Production systems available	Wednesday 5 October 2022	Production systems available to participants
Related documents publication	Wednesday 5 October 2022	See page Error! Reference source not found. 6
MSUG: post-production review	Wednesday 19 October 2022	Market systems user group meeting to review the implementation of the production release

3 Participant Impact

3.1 Data Model packages

3.1.1 GAS_SUPPLY_HUB

Gas Data Model changes for [GSH Technical Specification – July 2022](#), describing the EFP Trade Submission project.

3.1.2 GAS_BB

Gas Data Model changes for the [Gas Transparency Measures Project](#).

3.2 Data Subscription

3.2.1 Auto-subscription

Existing GSH data model participants

- **Are** auto subscribed to **new** files.
- **Are not** auto subscribed to **existing** files.

New GSH Data Model participants

- New participants are auto subscribed to **all** files.

4 Gas Transparency Measures

4.1 Goal

Gas Bulletin Board (GBB) stakeholders want easy access and to utilise information on the GBB to understand the short-term forecast of the demand-supply balance. This project’s aim is to address two key elements of the NGL and NGR:

1. Changes to the **Gas Statement of Opportunities (GSOO)**, strengthening AEMO’s information gathering.
2. Changes to the **Gas Bulletin Board**, incorporating additional GSOO information.

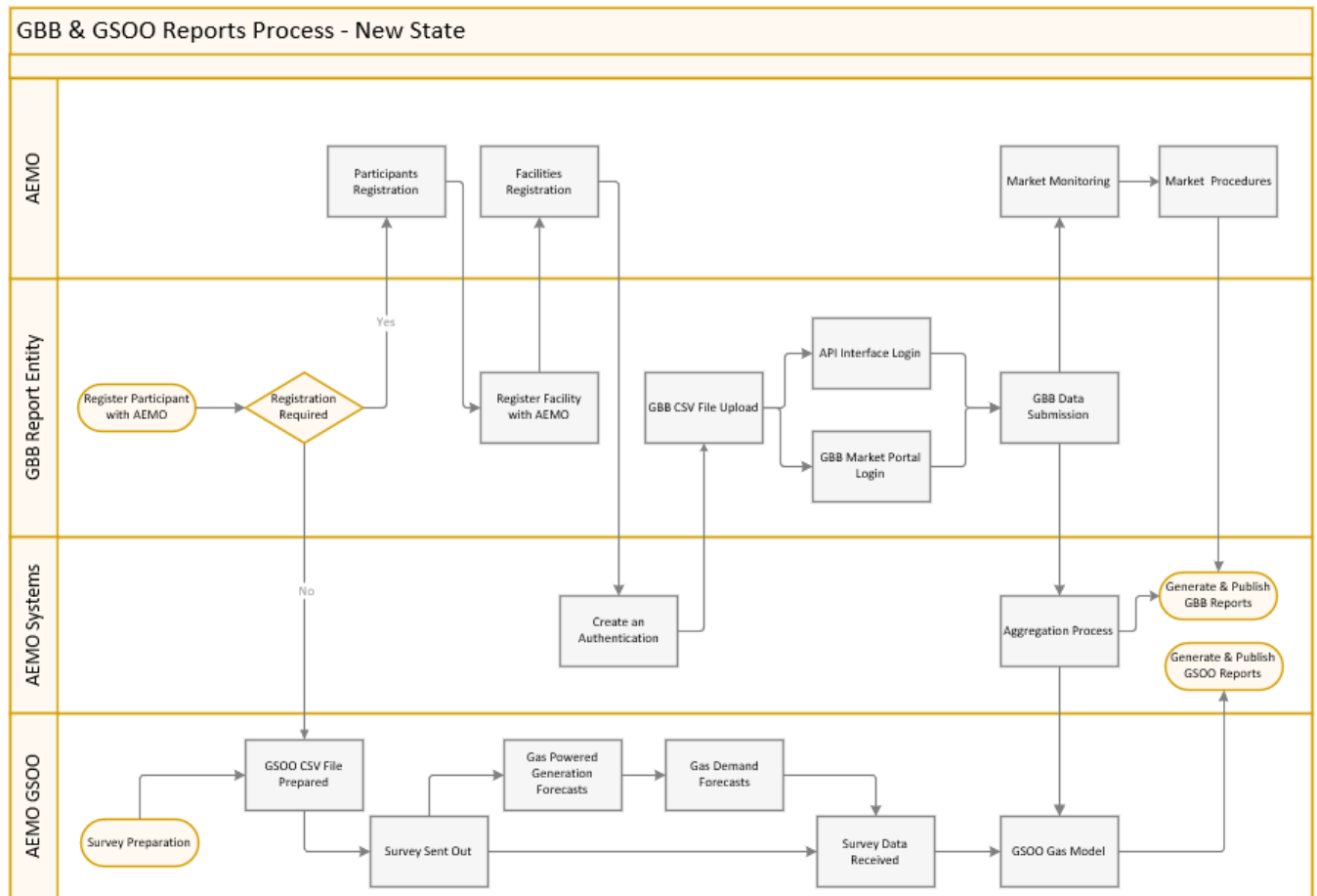
4.2 High-level changes

Function	Description
Rules	- Strengthened GSOO rules
Procedures	- New GSOO Market Procedure - Mandatory GSOO survey - BB market procedures and related guides
Gas Bulletin Board	- Incorporation of GSOO information into the Gas Bulletin Board - New data submissions - New reports - Data portal upgrade - Integrated Large user data.
Facility	New facility types: - Large User Facility - LNG Export Facility - LNG Import Facility
Participant types	New participant types: - BB Reporting Agent (was Capacity Transaction Reporting Agent) - BB Field Owner - Large User - LNG Processor - Capacity Seller - Gas Seller
Data Model	- New Gas Data Model version 2.2 with new and updated reports
Submissions and reports	- New report process - Updates to submissions and reports

4.3 Rule and procedure changes

Type	Details
Variation Rules 2020	<p>Rules to give effect to the market transparency measures require amendments to the following parts of the National Gas Rules (NGR):</p> <ul style="list-style-type: none"> • Part 15B – Procedures • Part 15D – Gas Statement of Opportunities • Part 17 – Miscellaneous provisions relating to the AER • Part 18 – National Gas Services Bulletin Board • Part 18A – Compression and storage terms and prices • Schedule 1 – Transitional Provisions – Part 15 – Transitional provisions consequent on the National Gas Amendment (Market Transparency) Rule 2020

4.3.1 New reports process



4.4 Related resources

- [Measures to improve transparency in the gas market: COAG Regulation Impact Statement for consultation.](#)

Gas Transparency Measures

- **National Gas (South Australia) (Market Transparency) Amendment Bill 2019**
- **National Gas (South Australia) (Market Transparency) Variation Regulations 2019**
- **National Gas Market Transparency Variation Rules 2019**
- **Regulatory amendments to increase transparency in the gas market.**

5 Gas Data Model v2.2

Gas participants can use the pdrBatcher and pdrLoader to load INT reports into their Data Interchange instances.

5.1 Data Model changes summary

Package	Table name	Change	Details
GAS_SUPPLY_HUB	GSH_TRADES_STAGING	New	EFP Trades staging data from traders
	GSH_TRADES	Modified	Provide participants (buyer and seller) a confirmation whenever a trade is executed through auto matching of bids and offers or by off-Market trades The report also provides participants a list of all their future trades when triggered daily after the end of the trades for the current day
	GSH_DELIVERY_OBLIGATIONS	Modified	Provides participants with their Delivery Obligations at each location. Delivery Obligation quantities are results of the delivery netting process
GAS_BB	GAS_BASIN	New	A list of all basins
	GAS_DEVFACILITY	New	Details of all Facility Developments
	GAS_DEVFACILITY_DETAIL	New	Details of all Facility Developments over time
	GAS_DEVFACILITY_FACILITY	New	Any facility related to the dev facility
	GAS_FIELD	New	Field location
	GAS_FIELD_DETAIL	New	Field details
	GAS_FIELDINTEREST	New	Field Interest annual reporting date

Package	Table name	Change	Details
	GAS_FIELDINTEREST_DETAIL	New	Information about Field Interests
	GAS_FIELDINTEREST_PARTICIPANT	New	The responsible participant of the field interest
	GAS_FIELDINTEREST_SHARE	New	Field owner group members
	GAS_FIELDINTEREST_SHARETRK	New	Filed Share tracking details over time
	GAS_LNG_SHIPMENT	New	A list of all LNG shipments
	GAS_LNG_TRANSACTION	New	LNG transaction aggregated data
	GAS_RESERVES_AND_RESOURCES	New	Information about Field Reserves and Resources
	GAS_SHIPPER_LIST	New	A list of shippers who have contracted primary Storage, Compression or Pipeline capacity
	GAS_SHORT_TERM_TRANS	New	Information regarding short-term gas transactions
	GAS_SHORT_TERM_SWAP_TRANS	New	Information regarding short-term gas swap transactions
	GAS_STORAGE_CAPACITY_TRANS	New	Gas storage capacity transactions
	GAS_GSH_TRADES	New	Provide the participants (buyer and seller) a confirmation whenever a trade is executed through auto matching of bids and offers or by off-Market trades. The report also provides participants with a list of all their future trades when triggered daily after the end of the trades for the current day
	GAS_DAILY_STORAGE_ACTUAL	Modified	New field – CushionGasQuantity
	GAS_FACILITY	Modified	New field – FacilityShortName
	GAS_FACILITY_DETAIL	Modified	GasDayStartHour no longer populated
	GAS_FACILITY_NODE_CONNECTION	Modified	New fields – ConnectionPointShortNam + Exemption Description

Package	Table name	Change	Details
	GAS_FACILITY_SUMMARY	Modified	GasDayStartHour no longer populated
	GAS_PARTICIPANT_DETAIL	Modified	New field OrganisationTypeName

5.2 Package: GAS_SUPPLY_HUB

5.2.1 New table: GSH_TRADES_STAGING

Comment	Provides trading participants a confirmation whenever an EFP trade is submitted to AEMO
Visibility	Private
Data volume	Medium
Trigger	Participant submission
Participant file share location	<#INTERFACE>\<#PARTICIPANTID>\IMPORT\GSH\REPORTS\
Primary key (in order)	RECORD_ID

New columns

Field Name	Data type	Comment	PK
RECORD_ID	VARCHAR2(20)	The unique identifier of the record	Y
MARKET_ID	VARCHAR2(20)	The unique Market ID	N
PARTICIPANT_ID	VARCHAR2(20)	The unique identifier of the participant	N
GAS_FUTURE_ID	VARCHAR2(20)	The EFP Trade ID for matching trades	N
PRODUCT_GROUP_CODE	VARCHAR2(20)	AEMO uses a default value only: GAS-WAL. Data submitted by participants is not stored	N
PRODUCT_TYPE_CODE	VARCHAR2(20)	AEMO uses a default value only: NG Months. Data submitted by participants is not stored	N
DELIVERY_POINT	VARCHAR2(40)	AEMO uses a default value only: WAL HP Trade Point. Data submitted by participants is not stored	N
START_DATE	DATE	The gas start day for the EFP trade period	N
END_DATE	DATE	The gas end day for the EFP trade period	N
TRADE_TYPE	VARCHAR2(20)	Buy or Sell	N
VOLUME	NUMBER(18,8)	Trade quantities measured in GJ for each Gas Day in the Delivery Period	N
PRICE	NUMBER(18,8)	Trade price	N
STATUS	VARCHAR2(20)	Submission Status: PENDING, FAIL, MATCH, OVERRIDE	N
VALIDATION_MSG	VARCHAR2(255)	Submission validation message	N
SUBMITTED_TIME	DATE	Data submission time	N



Field Name	Data type	Comment	PK
LASTCHANGED	DATE	The date and time the report is generated	N

5.2.2 Modified table: GSH_TRADES

Comment	Provides participants (buyer and seller) a confirmation whenever a trade is executed through auto matching of bids and offers or by off-Market trades. The report also provides participants a list of all their EFP trades when triggered daily after the end of the trades for the current day
Visibility	Private
Data volume	Medium
Trigger	Each time there is an EFP Trade submission, match, and trade creation
Participant file share location	<#INTERFACE>\<#PARTICIPANTID>\IMPORT\GSH\REPORTS\
Primary key (in order)	MARKET_ID, TRADE_ID

New columns

Field Name	Data type	Comment	PK
GAS_FUTURE_ID	VARCHAR2(20)	The EFP Trade ID for matching trades	N



5.2.3 Modified table: GSH_DELIVERY_OBLIGATIONS

Comment	Provides participants with their Delivery Obligations at each location. Delivery Obligation quantities are results of the delivery netting process
Visibility	Private
Data volume	Medium
Trigger	On table update
Participant file share location	<#INTERFACE>\<#PARTICIPANTID>\IMPORT\GSH\REPORTS\
Primary key (in order)	NETTING_TRANSACTION_ID

New columns

Field Name	Data type	Comment	PK
RECEIPT_POINT	VARCHAR2(40)	Receipt point specified by the buyer or seller in an order submission for capacity products	N

5.3 Package: GAS_BB

5.3.1 New table: GAS_BASIN

Comment	This report displays a list of all basins
----------------	---



Visibility	Public
Data volume	Small
Trigger	Participant submission
Participant file share location	<#INTERFACE>\<#PARTICIPANTID>\IMPORT\GASBB\REPORTS\
Primary key (in order)	BASINID

New columns

Field Name	Data type	Comment	PK
BASINID	NUMBER(20,0)	A unique AEMO defined Facility Identifier	Y
BASINNAME	VARCHAR2(100)	The name of the basin. If short name exists, then short name included in report	N
LASTCHANGED	DATE	Date and time record was last modified	N

5.3.2 New table: GAS_DEVFACILITY

Comment	Details of all Facility Developments
Visibility	Public
Data volume	Small
Trigger	Participant submission



Participant file share location	<#INTERFACE>\<#PARTICIPANTID>\IMPORT\GASBB\REPORTS\
Primary key (in order)	DEVFACILITYID

New columns

Field Name	Data type	Comment	PK
DEVFACILITYID	NUMBER(20,0)	A unique AEMO defined Development Facility Identifier	Y
DESCRIPTION	VARCHAR2(100)	Description of development facility	N
FACILITYTYPE	VARCHAR2(40)	The facility development type	N
LASTCHANGED	DATE	Date and time record was last modified	N

5.3.3 New table: GAS_DEVFACILITY_DETAIL

Comment	Details of all Facility Developments over time
Visibility	Public
Data volume	Small
Trigger	Participant submission
Participant file share location	<#INTERFACE>\<#PARTICIPANTID>\IMPORT\GASBB\REPORTS\
Primary key (in order)	DEVFACILITYID+EFFECTIVEDATE+VERSIONDATETIME

New columns

Field Name	Data type	Comment	PK
DEVFACILITYID	NUMBER(20,0)	A unique AEMO defined Development Facility Identifier	Y
EFFECTIVEDATE	DATE	The effective date of the submission	Y
VERSIONDATETIME	DATE	Time a successful submission is accepted by AEMO systems	Y
PROPOSEDNAME	VARCHAR2(100)	The name of the Facility development	N
MINNAMEPLATE	NUMBER(18,3)	The lower estimate of nameplate rating capacity	N
MAXNAMEPLATE	NUMBER(18,3)	The upper estimate of nameplate rating capacity	N
LOCATION	VARCHAR2(200)	The location of the development facility	N
PLANNEDCOMMISSIONFROM	VARCHAR2(7)	The planned start date of commissioning	N
PLANNEDCOMMISSIONTO	VARCHAR2(7)	The planned end date of commissioning	N
DEVELOPMENTSTAGE	VARCHAR2(200)	The current stage of the development facility being, PROPOSED, COMMITTED, CANCELLED, ENDED	N
COMMENTS	VARCHAR2(400)	Any additional comments included in the submission	N
AUTHORISEDDATE	DATE	Date and time this operating state was authorised	N
AUTHORISEDBY	VARCHAR2(30)	Reporting entity for the facility	N
LASTCHANGED	DATE	Date and time record was last modified	N



5.3.4 New table: GAS_DEVFACILITY_FACILITY

Comment	Any facility that is related to dev facility
Visibility	Public
Data volume	Small
Trigger	Participant submission
Participant file share location	<#INTERFACE>\<#PARTICIPANTID>\IMPORT\GASBB\REPORTS\
Primary key (in order)	DEVFACILITYID+EFFECTIVEDATE+VERSIONDATETIME+FACILITYID

New columns

Field Name	Data type	Comment	PK
DEVFACILITYID	NUMBER(20,0)	A unique AEMO defined Development Facility Identifier	Y
EFFECTIVEDATE	DATE	The effective date of the submission	Y
VERSIONDATETIME	DATE	Time a successful submission is accepted by AEMO systems	Y
FACILITYID	NUMBER(20,0)	Unique facility identifier	Y

5.3.5 New table: GAS_FIELD

Comment	Field location
---------	----------------



Visibility	Public
Data volume	Small
Trigger	Participant submission
Participant file share location	<#INTERFACE>\<#PARTICIPANTID>\IMPORT\GASBB\REPORTS\
Primary key (in order)	FIELDID

New columns

Field Name	Data type	Comment	PK
FIELDID	NUMBER(20,0)	A unique AEMO defined Field Identifier	Y
LASTCHANGED	DATE	Date and time record was last modified	N
STATEID	NUMBER(10,0)	The state ID the field interest is in	N
STATE	VARCHAR2(5)	The state the field interest is in	N

5.3.6 New table: GAS_FIELD_DETAIL

Comment	Field details
Visibility	Public
Data volume	Small



Trigger	Participant submission
Participant file share location	<#INTERFACE>\<#PARTICIPANTID>\IMPORT\GASBB\REPORTS\
Primary key (in order)	FIELDID+EFFECTIVEDATE+VERSIONDATETIME

New columns

Field Name	Data type	Comment	PK
FIELDID	NUMBER(20,0)	A unique AEMO defined Field Identifier	Y
EFFECTIVEDATE	DATE	The date on which the record takes effect	Y
VERSIONDATETIME	DATE	Time a successful submission is accepted by AEMO systems	Y
FIELDNAME	VARCHAR2(100)	The name of the Field in which the Field Interest is located	N
FIELDSHORTNAME	VARCHAR2(30)	The short name of the field	N
DESCRIPTION	VARCHAR2(400)	Additional information relating to the field	N
LOCATIONDESCRIPTION	VARCHAR2(200)	Additional information relating to the location of the field	N
AUTHORISEDDATE	DATE	Date and time this operating state was authorised	N
LASTCHANGED	DATE	Date and time record was last modified	N



5.3.7 New table: GAS_FIELDINTEREST

Comment	Field Interest annual reporting date
Visibility	Public
Data volume	Small
Trigger	Participant submission
Participant file share location	<#INTERFACE>\<#PARTICIPANTID>\IMPORT\GASBB\REPORTS\
Primary key (in order)	FIELDINTERESTID

New columns

Field Name	Data type	Comment	PK
FIELDINTERESTID	NUMBER(20,0)	A unique AEMO defined Field Interest Identifier	Y
FIELDID	NUMBER(20,0)	A unique AEMO defined Field Identifier	N
ANNUALREPORTINGDATE	VARCHAR2(30)	The annual reporting date of the field interest	N

5.3.8 New table: GAS_FIELDINTEREST_DETAIL

Comment	This report displays information about Field Interests
Visibility	Public
Data volume	Small



Trigger	Participant submission
Participant file share location	<#INTERFACE>\<#PARTICIPANTID>\IMPORT\GASBB\REPORTS\
Primary key (in order)	FIELDINTERESTID+EFFECTIVEDATE+VERSIONDATETIME

New columns

Field Name	Data type	Comment	PK
FIELDINTERESTID	NUMBER(20,0)	A unique AEMO defined Field Interest Identifier	Y
EFFECTIVEDATE	DATE	The date on which the record takes effect	Y
VERSIONDATETIME	DATE	Time a successful submission is accepted by AEMO systems	Y
PETROLEUMTENEMENTS	VARCHAR2(300)	The petroleum tenements which are the subject of the BB field interest	N
PROCESSINGFACILITIES	VARCHAR2(300)	The processing facility used to process gas from the field	N
RESOURCECLASSIFICATION	VARCHAR2(100)	Classification of the resources in the field as conventional or unconventional	N
RESOURCESUBCLASSIFICATION	VARCHAR2(100)	Any further sub-classification of the resources	N
NATUREOFGAS	VARCHAR2(100)	The nature of the gas in the field using classifications in the BB Procedures	N
TENEMENTSHARE	NUMBER(10,3)	The field interest share of the petroleum tenements	N
AUTHORISEDDATE	DATE	Date and time this operating state was authorised	N
LASTCHANGED	DATE	Date and time record was last modified	N

5.3.9 New table: GAS_FIELDINTEREST_PARTICIPANT

Comment	The responsible participant of the field interest
Visibility	Public
Data volume	Small
Trigger	Participant submission
Participant file share location	<#INTERFACE>\<#PARTICIPANTID>\IMPORT\GASBB\REPORTS\
Primary key (in order)	FIELDINTERESTID+EFFECTIVEDATE+VERSIONDATETIME+COMPANYID

New columns

Field Name	Data type	Comment	PK
FIELDINTERESTID	NUMBER(20,0)	A unique AEMO defined Field Interest Identifier	Y
EFFECTIVEDATE	DATE	The date on which the record takes effect	Y
VERSIONDATETIME	DATE	Time a successful submission is accepted by AEMO systems	Y
COMPANYID	NUMBER(10,0)	The company ID of the responsible field owner	Y
AUTHORISEDDATE	DATE	Date and time this operating state was authorised	N
LASTCHANGED	DATE	Date and time record was last modified	N



5.3.10 New table: GAS_FIELDINTEREST_SHARE

Comment	Field owner group members
Visibility	Public
Data volume	Small
Trigger	Participant submission
Participant file share location	<#INTERFACE>\<#PARTICIPANTID>\IMPORT\GASBB\REPORTS\
Primary key (in order)	FIELDINTERESTID+EFFECTIVEDATE+VERSIONDATETIME+REPORTEDCOMPANY

New columns

Field Name	Data type	Comment	PK
FIELDINTERESTID	NUMBER(20,0)	A unique AEMO defined Field Interest Identifier	Y
EFFECTIVEDATE	DATE	The date on which the record takes effect	Y
VERSIONDATETIME	DATE	Time a successful submission is accepted by AEMO systems	Y
REPORTEDCOMPANY	VARCHAR2(100)	Member of the field owner group	Y
PERCENTAGESHARE	NUMBER(18,8)	The percentage share of the group member	N



5.3.11 New table: GAS_FIELDINTEREST_SHARETRK

Comment	Filed Share tracking details over time
Visibility	Public
Data volume	Small
Trigger	Participant submission
Participant file share location	<#INTERFACE>\<#PARTICIPANTID>\IMPORT\GASBB\REPORTS\
Primary key (in order)	FIELDINTERESTID+EFFECTIVEDATE+VERSIONDATETIME

New columns

Field Name	Data type	Comment	PK
FIELDINTERESTID	NUMBER(20,0)	A unique AEMO defined Field Interest Identifier	Y
EFFECTIVEDATE	DATE	The date on which the record takes effect	Y
VERSIONDATETIME	DATE	Time a successful submission is accepted by AEMO systems	Y
AUTHORISEDDATE	DATE	Date and time this operating state was authorised	N
LASTCHANGED	DATE	Date and time record was last modified	N



5.3.12 New table: GAS_LNG_SHIPMENT

Comment	This table displays a list of all LNG shipments
Visibility	Public
Data volume	Medium
Trigger	Time trigger daily at 3:00 PM AEST
Participant file share location	<#INTERFACE>\<#PARTICIPANTID>\IMPORT\GASBB\REPORTS\
Primary key (in order)	TRANSACTIONID+FACILITYID+VERSIONDATETIME

New columns

Field Name	Data type	Comment	PK
TRANSACTIONID	VARCHAR2(40)	Unique shipment identifier	Y
FACILITYID	NUMBER(20,0)	Unique facility identifier	Y
VERSIONDATETIME	DATE	Time a successful submission is accepted by AEMO systems	Y
SHIPMENTDATE	DATE	For LNG export facility, the departure date. For LNG import facility, the date unloading commences at the LNG import facility	N
VOLUME PJ	NUMBER(18,8)	Volume of the shipment in PJ	N
LASTCHANGED	DATE	Date and time record was last modified	N



5.3.13 New table: GAS_LNG_TRANSACTION

Comment	This table displays LNG transaction aggregated data
Visibility	Public
Data volume	Medium
Trigger	Time trigger daily at 3:00 PM AEST
Participant file share location	<#INTERFACE>\<#PARTICIPANTID>\IMPORT\GASBB\REPORTS\
Primary key (in order)	TRANSACTIONSTARTDATE

New columns

Field Name	Data type	Comment	PK
TRANSACTIONSTARTDATE	DATE	Transaction start date	Y
TRANSACTIONENDDATE	DATE	Transaction end date	N
VOLWEIGHTPRICE	NUMBER(18,8)	The volume weighted price for the reporting period	N
VOLUMEPJ	NUMBER(18,8)	The total volume of the transactions	N
SUPPLYPERIODSTART	DATE	The earliest start date of all transactions captured in the reporting period	N
SUPPLYPERIODEND	DATE	The latest end date of all transactions captured in the reporting period	N



5.3.14 New table: GAS_RESERVES_AND_RESOURCES

Comment	This table displays information about Field Reserves and Resources
Visibility	Public
Data volume	Medium
Trigger	Time trigger every 30 mins
Participant file share location	<#INTERFACE>\<#PARTICIPANTID>\IMPORT\GASBB\REPORTS\
Primary key (in order)	FIELDINTERESTID+EFFECTIVEDATE+VERSIONDATETIME

New columns

Field Name	Data type	Comment	PK
FIELDINTERESTID	NUMBER(20,0)	A unique AEMO defined Field Interest Identifier	Y
EFFECTIVEDATE	DATE	The date on which the record takes effect	Y
VERSIONDATETIME	DATE	Time a successful submission is accepted by AEMO systems	Y
DEVELOPEDRESERVE1P	NUMBER(18,3)	An estimate of the BB field interest 1P developed reserves	N
DEVELOPEDRESERVE2P	NUMBER(18,3)	An estimate of the BB field interest 2P developed reserves	N
DEVELOPEDRESERVE3P	NUMBER(18,3)	An estimate of the BB field interest 3P developed reserves	N
UNDEVELOPEDRESERVE1P	NUMBER(18,3)	An estimate of the BB field interest 1P undeveloped reserves	N

Field Name	Data type	Comment	PK
UNDEVELOPEDRESERVE2P	NUMBER(18,3)	An estimate of the BB field interest 2P undeveloped reserves	N
UNDEVELOPEDRESERVE3P	NUMBER(18,3)	An estimate of the BB field interest 3P undeveloped reserves	N
RESOURCES2C	NUMBER(18,3)	An estimate of the BB field interest 2C resources	N
PRODUCTIONCHANGERESERVE2P	NUMBER(18,3)	An estimate of the total movement in the BB field interest 2P reserves since the end of prior reporting year due to the production of gas	N
PROVEDAREAEXTENSIONRESERVE2P	NUMBER(18,3)	An estimate of the total movement in the BB field interest 2P reserves since the end of prior reporting year due to the extension of a field's proved area	N
PERCENTAGECHANGERESERVE2P	NUMBER(18,3)	An estimate of the total movement in the BB field interest 2P reserves since the end of prior reporting year due to a percentage change in the BB field interest	N
UPWARDREVISION3PRESERVETO2P	NUMBER(18,3)	An estimate of the total movement in the BB field interest 2P reserves since the end of prior reporting year due to an upward revision of 2P reserves arising from the reclassification of 3P reserves or resources to 2P reserves	N
DOWNWARDREVISION2PRESERVETO3P	NUMBER(18,3)	An estimate of the total movement in the BB field interest 2P reserves since the end of prior reporting year due to a downward revision of 2P reserves arising from the reclassification of 2P reserves to 3P reserves or resources	N
OTHERREVISIONSRESERVE2P	NUMBER(18,3)	An estimate of the total movement in the BB field interest 2P reserves since the end of prior reporting year due to other revisions	N
MATURITYSUBCLASS2P	VARCHAR2(100)	The project maturity sub-class for the 2P reserves	N
MATURITYSUBCLASS2C	VARCHAR2(100)	The project maturity sub-class for the 2C resources	N

Field Name	Data type	Comment	PK
MINDATE2P	DATE	The earliest estimated date for the production of the 2P reserves	N
MAXDATE2P	DATE	The latest estimated date for the production of the 2P reserves	N
MINDATE2C	DATE	The earliest estimated date for the production of the 2C resources	N
MAXDATE2C	DATE	The latest estimated date for the production of the 2C resources	N
EXPECTEDBARRIERS2C	VARCHAR2(400)	A list of any barriers to the commercial recovery of the 2C resources	N
RESOURCESESTIMATEMETHOD	VARCHAR2(200)	The resources assessment method used to prepare the reserves and resources estimates	N
CONVERSIONFACTORQTYTCFTOPJ	NUMBER(18,3)	The conversion factor used to convert quantities measured in trillions of cubic feet to PJ	N
ECONOMICASSUMPTION	VARCHAR2(400)	The key economic assumptions in the forecast case used to prepare the reserves and resource estimates and the source of the assumptions	N
UPDATEREASON	VARCHAR2(400)	The reason for the update	N
PREPAREDBY	VARCHAR2(100)	The name of the person who prepared the estimates	N
INDEPENDENTESTIMATE	VARCHAR2(3)	Whether the qualified gas industry professional who prepared, or supervised the preparation of, the reserves and resources estimates is independent of the BB reporting entity	N
AUTHORISEDDATE	DATE	Date and time this operating state was authorised	N
LASTCHANGED	DATE	Date and time record was last modified	N



5.3.15 New table: GAS_SHIPPER_LIST

Comment	A list of shippers who have contracted primary Storage, Compression or Pipeline capacity
Visibility	Public
Data volume	Small
Trigger	Participant submission
Participant file share location	<#INTERFACE>\<#PARTICIPANTID>\IMPORT\GASBB\REPORTS\
Primary key (in order)	FACILITYID+EFFECTIVEDATE+VERSIONDATETIME+SHIPPERNAME

New columns

Field Name	Data type	Comment	PK
FACILITYID	NUMBER(20)	A unique AEMO defined Facility Identifier.	Y
EFFECTIVEDATE	DATE	Gas date that corresponding record takes effect	Y
VERSIONDATETIME	DATE	Time a successful submission is accepted by AEMO systems	Y
SHIPPERNAME	VARCHAR2(200)	The name of the shipper who holds the capacity	Y

5.3.16 New table: GAS_SHORT_TERM_TRANS

Comment	These reports display information regarding short-term gas transactions
Visibility	Public
Data volume	Medium
Trigger	Time trigger daily at 3:00 PM AEST
Participant file share location	<#INTERFACE>\<#PARTICIPANTID>\IMPORT\GASBB\REPORTS\
Primary key (in order)	PERIODSTARTDATE+STATE

New columns

Field Name	Data type	Comment	PK
PERIODSTARTDATE	DATE	The time period start date	Y
PERIODENDDATE	DATE	The time period end date	N
STATE	VARCHAR2(5)	The state where the transaction occurred	Y
QUANTITY	NUMBER(18,8)	Total volume of the transactions where trade date is in the reporting period for the given state	N
VOLUMEWEIGHTEDPRICE	NUMBER(18,8)	Volume weighted price of transactions where trade date is in the reporting period for the given State	N
TRANSACTIONTYPE	VARCHAR2(255)	Transaction Type is Supply for these short-term transactions reports	N
SUPPLYPERIODSTART	DATE	The earliest start date of all transactions in the reporting period for the given state	N



Field Name	Data type	Comment	PK
SUPPLYPERIODEND	DATE	The latest end date of all transactions in the reporting period for the given state	N

5.3.17 New table: GAS_SHORT_TERM_SWAP_TRANS

Comment	These reports display information regarding short-term gas swap transactions
Visibility	Public
Data volume	Medium
Trigger	Time trigger daily at 3:00 PM AEST
Participant file share location	<#INTERFACE>\<#PARTICIPANTID>\IMPORT\GASBB\REPORTS\
Primary key (in order)	PERIODSTARTDATE+STATE

New columns

Field Name	Data type	Comment	PK
PERIODSTARTDATE	DATE	The time period start date	Y
PERIODENDDATE	DATE	The time period end date	N
STATE	VARCHAR2(5)	The state where the transaction occurred	Y
QUANTITY	NUMBER(18,8)	Total volume of the transactions where trade date is in the reporting period for the given state	N

Field Name	Data type	Comment	PK
VOLUMEWEIGHTEDPRICE	NUMBER(18,8)	Volume weighted price of transactions where trade date is in the reporting period for the given State	N
TRANSACTIONTYPE	VARCHAR2(255)	Whether the swap is a location swap, time swap or both location and time swap	N
SUPPLYPERIODSTART	DATE	The earliest start date of all transactions in the reporting period for the given state	N
SUPPLYPERIODEND	DATE	The latest end date of all transactions in the reporting period for the given state	N

5.3.18 New table: GAS_STORAGE_CAPACITY_TRANS

Comment	Gas storage capacity transactions
Visibility	Public
Data volume	Medium
Trigger	Time trigger every 30 mins
Participant file share location	<#INTERFACE>\<#PARTICIPANTID>\IMPORT\GASBB\REPORTS\
Primary key (in order)	TRADEID+VERSIONDATETIME

New columns

Field Name	Data type	Comment	PK
TRADEID	NUMBER(20,0)	A unique AEMO defined Transaction Identifier	Y

Field Name	Data type	Comment	PK
VERSIONDATETIME	DATE	Time a successful submission is accepted by AEMO systems	Y
TRADEDATE	DATE	The date the transaction was entered into	N
FROMGASDATE	DATE	The start date of the transaction	N
TOGASDATE	DATE	The end date of the transaction	N
FACILITYID	NUMBER(20,0)	The gas storage facility ID for the facility by means of which the service is provided	N
PRIORITY	VARCHAR2(255)	The priority given to the service to which the transaction relates	N
MAXIMUMSTORAGEQUANTITY	NUMBER(18,3)	The storage capacity the subject of the transaction (in GJ)	N
INJECTIONCAPACITY	NUMBER(18,3)	The injection capacity (in GJ/day)	N
WITHDRAWALCAPACITY	NUMBER(18,3)	The withdrawal capacity (in GJ/day)	N
PRICE	NUMBER(18,3)	The transaction price (in \$/GJ/day or where relevant, in \$/GJ)	N
PRICESTRUCTURE	VARCHAR2(255)	The price structure applicable to the transaction	N
PRICEESCALATIONMECHANISM	VARCHAR2(255)	Any price escalation mechanism applicable to the transaction	N
CANCELLED	NUMBER(1,0)	Whether the record has been cancelled	N
LASTCHANGED	DATE	The date the record was last updated	N



5.3.19 New table: GAS_GSH_TRADES

Comment	Provides participants (buyer and seller) a confirmation whenever a trade is executed through auto matching of bids and offers or by off-market trades. Also provides participants with a list of all their future trades when triggered daily after the end of the trades for the current day
Visibility	Public
Data volume	Medium
Trigger	Time trigger
Participant file share location	<#INTERFACE>\<#PARTICIPANTID>\IMPORT\GASBB\REPORTS\
Primary key (in order)	TRADE_DATE+TRANSACTION_TYPE+PRODUCT+LOCATION+TRADE_PRICE

New columns

Field Name	Data type	Comment	PK
TRADE_DATE	DATE	Date and time the trade is executed	Y
TRANSACTION_TYPE	VARCHAR2(20)	The type of the trade. Valid values are AUTO_MATCHED, OFF_MARKET_TRADE	Y
PRODUCT	VARCHAR2(80)	The product delivery period for the Gas Supply Hub market	Y
LOCATION	VARCHAR2(100)	Product location for the Gas Supply Hub market	Y
NO_OF_TRADES	NUMBER(10)	Count of number of trades	N
TRADE_PRICE	NUMBER(18,8)	Price value of the trade in \$/GJ	Y

Field Name	Data type	Comment	PK
DAILY_QTY_GJ	NUMBER(18,8)	Volume of gas transacted on the Trading Platform in GJ/day	N
START_DATE	DATE	The start gas day for the order delivery period	N
END_DATE	DATE	The end gas day for the order delivery period	N
MANUAL_TRADE	VARCHAR2(50)	Whether the trade is a manual trade	N
LASTCHANGED	DATE	The date the record was last updated	N

5.3.20 Modified table: GAS_DAILY_STORAGE_ACTUAL

Comment	Provide on each gas day D, the actual quantity of natural gas held in each storage facility at the end of the gas day D-1
Visibility	Public
Data volume	Medium
Trigger	Participant submission
Participant file share location	<#INTERFACE>\<#PARTICIPANTID>\IMPORT\GASBB\REPORTS\
Primary key (in order)	GASDATE, FACILITYID, VERSIONDATETIME



New columns

Field Name	Data type	Comment	PK
CUSHIONGASQUANTITY	NUMBER(18,3)	The quantity of natural gas that must be retained in the Storage or LNGImport facility to maintain the required pressure and deliverability rates	N

5.3.21 Modified table: GAS_FACILITY

Comment	Provides details of all facilities and associated nodes and connection points.
Visibility	Public
Data volume	Small
Trigger	Participant submission
Participant file share location	<#INTERFACE>\<#PARTICIPANTID>\IMPORT\GASBB\REPORTS\
Primary key (in order)	FACILITYID



New columns

Field Name	Data type	Comment	PK
FACILITYSHORTNAME	VARCHAR2(30)	An abbreviation of the facility name	N

5.3.22 Modified table: GAS_FACILITY_DETAIL

Comment	The list of all gas Facilities.
Visibility	Public
Data volume	Small
Trigger	Participant submission
Participant file share location	<#INTERFACE>\<#PARTICIPANTID>\IMPORT\GASBB\REPORTS\
Primary key (in order)	FACILITYID, EFFECTIVEDATE, VERSIONDATETIME

Modified columns

Field Name	Data type	Comment	PK
GASDAYSTARTHOUR	NUMBER(2,0)	Column no longer populated	N



5.3.23 Modified table: GAS_FACILITY_NODE_CONNECTION

Comment	Identifies the set of connection points associated with a node. There are up to four connection points to a node, and up to two connection points for each facility or node combination. For example, a pipeline might be connected to a storage facility via a node. Two connection points in the node are connected to the pipe and two connection points to the storage facility. Each pair of connections is a delivery or a receipt type of connection
Visibility	Public
Data volume	Small
Trigger	Participant submission
Participant file share location	<#INTERFACE>\<#PARTICIPANTID>\IMPORT\GASBB\REPORTS\
Primary key (in order)	FACILITYID, EFFECTIVEDATE, VERSIONDATETIME, NODEID, CONNECTIONPOINTID, FLOWDIRECTION

New columns

Field Name	Data type	Comment	PK
CONNECTIONPOINTSHORTNAME	VARCHAR2(30)	An abbreviation of the connection point name	N
EXEMPTIONDESCRIPTION	VARCHAR2(200)	Description of the exemption	N



5.3.24 Modified table: GAS_FACILITY_SUMMARY

Comment	The standing details on capacity of all gas plant facilities over time
Visibility	Public
Data volume	Medium
Trigger	Participant submission
Participant file share location	<#INTERFACE>\<#PARTICIPANTID>\IMPORT\GASBB\REPORTS\
Primary key (in order)	FACILITYID, STARTDATE, CONNECTIONPOINTID, FLOWDIRECTION

Modified columns

Field Name	Data type	Comment	PK
GASDAYSTARTHOUR	NUMBER(2,0)	Column No longer populated	N

5.3.25 Modified table: GAS_PARTICIPANT_DETAIL

Comment	The details of all registered organisations i.e the BB Participants of the Bulletin Board over time
Visibility	Public
Data volume	Small
Trigger	Participant submission



Comment	The details of all registered organisations i.e the BB Participants of the Bulletin Board over time
Participant file share location	<#INTERFACE>\<#PARTICIPANTID>\IMPORT\GASBB\REPORTS\
Primary key (in order)	COMPANYID, EFFECTIVEDATE, VERSIONDATETIME

New columns

Field Name	Data type	Comment	PK
ORGANISATIONTYPE	VARCHAR2(40)	The type of organisation	N

5.4 File interface changes

Package ID	File ID	Description	Batcher file masks	Frequency	Change	Auto-subscription
GAS_SUPPLY_HUB	GSH_TRADE_SINGLE	Visibility: private Provides a confirmation to Trading Participants (buyer and seller) when a trade is executed through auto matching of bids, offers, submissions or by off-Market trades	*_TRADEEXECUTION_*	On trade submission	Modified	No
	GSH_TRADE_RANGE	Visibility: private Triggered daily at the end of the Gas Day, providing Trading Participants with a list of their EFP trades	*_TRADEEXECUTION_*	Daily	Modified	No

Package ID	File ID	Description	Batcher file masks	Frequency	Change	Auto-subscription
	GSH.FUTURE_TRADE_SINGLE	<p>Visibility: private</p> <p>Contains all relevant records from EFP Trade submissions. Trading Participant only see their own submissions</p>	*_FUTURE_SUBMISSION_*	On future trade submission	New	Yes
GAS_BB	GASBB3_BASIN	<p>Visibility: public</p> <p>This report displays a list of all basins</p>	*_GAS_BASIN_*.CSV	On participant submission	New	Yes
	GASBB3_DEVFACILITY	<p>Visibility: public</p> <p>Details of all Facility Developments</p>	*_GASBB3_DEVFACILITY_*.CSV	On participant submission	New	Yes
	GASBB3_DEVFACILITY_DETAIL	<p>Visibility: public</p> <p>Details of all Facility Developments over time</p>	*_GASBB3_DEVFACILITY_DETAIL_*.CSV	On participant submission	New	Yes
	GASBB3_DEVFACILITY_FACILITY	<p>Visibility: public</p> <p>Any facility related to the dev facility</p>	*_GASBB3_DEVFACILITY_FACILITY_*.CSV	On participant submission	New	Yes
	GASBB3_FIELD	<p>Visibility: public</p> <p>Field location</p>	*_GASBB3_FIELD_*.CSV	On participant submission	New	Yes
	GASBB3_FIELD_DETAIL	<p>Visibility: public</p> <p>Field details</p>	*_GASBB3_FIELD_DETAIL_*.CSV	On participant submission	New	Yes
	GASBB3_FIELDINTEREST	<p>Visibility: public</p> <p>Field Interest annual reporting date</p>	*_GASBB3_FIELD_INTEREST_*.CSV	On participant submission	New	Yes

Package ID	File ID	Description	Batcher file masks	Frequency	Change	Auto-subscription
	GASBB3_FIELDINTEREST_DETAIL	Visibility: public Information about Field Interests	*_GASBB3_FIELDINTEREST_DETAIL_*.CSV	On participant submission	New	Yes
	GASBB3_FIELDINTEREST_PARTICIPANT	Visibility: public The responsible participant of the field interest	*_GASBB3_FIELD_INTEREST_PARTICIPANT_*.CSV	On participant submission	New	Yes
	GASBB3_FIELDINTEREST_SHARE	Visibility: public Field owner group members	*_GASBB3_FIELD_INTEREST_SHARE_*.CSV	On participant submission	New	Yes
	GASBB3_FIELDINTEREST_SHARETRK	Visibility: public Filed Share tracking details over time	*_GASBB3_FIELD_INTEREST_SHARE_TRK_*.CSV	On participant submission	New	Yes
	GASBB3_LNG_SHIPMENT	Visibility: public A list of all LNG shipments	*_GASBB3_LNG_SHIPMENT_*.CSV	On participant submission	New	Yes
	GASBB3_LNG_TRANSACTION	Visibility: public LNG transaction aggregated data	*_GASBB3_LNG_TRANSACTION_*.CSV	Time trigger	New	Yes
	GASBB3_RESERVES_AND_RESOURCES	Visibility: public Information about Field Reserves and Resources	*_GASBB3_RESERVES_AND_RESOURCES_*.CSV	On participant submission	New	Yes
	GASBB3_SHIPPER_LIST	Visibility: public A list of shippers who have contracted primary Storage, Compression or Pipeline capacity	*_GASBB3_SHIPPER_LIST_*.CSV	On participant submission	New	Yes

Package ID	File ID	Description	Batcher file masks	Frequency	Change	Auto-subscription
	GASBB3_SHORT_TERM_TRANS	Visibility: public Information regarding short-term gas transactions	*_GASBB3_SHORT_TERM_TRANS_*.CSV	Time trigger	New	Yes
	GASBB3_SHORT_TERM_SWAP_TRANS	Visibility: public Information regarding short-term gas swap transactions	*_GASBB3_SHORT_TERM_SWAP_TRANS_*.CSV	Time trigger	New	Yes
	GASBB3_STORAGE_CAPACITY_TRANS	Visibility: public Gas storage capacity transactions	*_GASBB3_STORAGE_CAPACITY_TRANS_*.CSV	On participant submission	New	Yes
	GASBB3_GSH_TRADES	Visibility: public Provide the participants (buyer and seller) a confirmation whenever a trade is executed through auto matching of bids and offers or by off-Market trades. The report also provides participants with a list of all their future trades when triggered daily after the end of the trades for the current day	*_GASBB3_GSH_TRADES_*.CSV	Time trigger	New	Yes
	GASBB3_DAILY_STORAGE_ACTUAL	Visibility: public Provide on each gas day D, the actual quantity of natural gas held in each storage facility at the end of the gas day D-1	*_GASBB3_DAILY_STORAGE_ACTUAL_*.CSV	On participant submission	Modified	No
	GASBB3_FACILITY	Visibility: public Provides details of all facilities and associated nodes and connection points.	*_GASBB3_FACILITY*.CSV	On participant submission	Modified	No

Package ID	File ID	Description	Batcher file masks	Frequency	Change	Auto-subscription
	GASBB3_FACILITY_NODE_TRK	Visibility: public Identifies the set of connection points associated with a node. There are up to four connection points to a node, and up to two connection points for each facility or node combination.	*_GASBB3_FACILITY_NODE_TRK_*.CSV	On participant submission	Modified	No
	GASBB3_PARTICIPANT_DETAIL	Visibility: public The details of all registered organisations i.e the BB Participants of the Bulletin Board over time	*_GASBB3_PARTICIPANT_DETAIL_*.CSV	On participant submission	Modified	No

5.5 Participant interfaces changes

Package Name	Gas Data Model table	File ID	CSV report type	Change
GAS_SUPPLY_HUB	GSH_TRADES_STAGING	GSH_FUTURE_TRADE_SINGLE	GSH,GSH_TRADE_STAGING,TRADES_STAGING,1	New
	GSH_TRADES	GSH_TRADE_SINGLE	GSH,GSH_TRADES,TRADES,4	Modified
GAS_BB	GSH_TRADES	GSH_TRADE_RANGE	GSH,GSH_TRADES,TRADES,4	Modified
	GAS_BASIN	GASBB3_BASIN	GASBB3,GAS_BASIN,1	New
	GAS_DEVFACILITY	GASBB3_DEVFACILITY	GASBB3,GAS_DEVFACILITY,1	New
	GAS_DEVFACILITY_DETAIL	GASBB3_DEVFACILITY_DETAIL	GASBB3,GAS_DEVFACILITY_DETAIL,1	New
	GAS_DEVFACILITY_FACILITY	GASBB3_DEVFACILITY_FACILITY	GASBB3,GAS_DEVFACILITY_FACILITY,1	New

Package Name	Gas Data Model table	File ID	CSV report type	Change
	GAS_FIELD	GASBB3_FIELD	GASBB3,GAS_FIELD,1	New
	GAS_FIELD_DETAIL	GASBB3_FIELD_DETAIL	GASBB3,GAS_FIELD_DETAIL,1	New
	GAS_FIELDINTEREST	GASBB3_FIELDINTEREST	GASBB3,GAS_FIELDINTEREST,1	New
	GAS_FIELDINTEREST_DETAIL	GASBB3_FIELDINTEREST_DETAIL	GASBB3,GAS_FIELDINTEREST_DETAIL,1	New
	GAS_FIELDINTEREST_PARTICIPANT	GASBB3_FIELDINTEREST_PARTICIPANT	GASBB3,GAS_FIELDINTEREST_PARTICIPANT,1	New
	GAS_FIELDINTEREST_SHARE	GASBB3_FIELDINTEREST_SHARE	GASBB3,GAS_FIELDINTEREST_SHARE,1	New
	GAS_FIELDINTEREST_SHARETRK	GASBB3_FIELDINTEREST_SHARETRK	GASBB3,GAS_FIELDINTEREST_SHARETRK,1	New
	GAS_LNG_SHIPMENT	GASBB3_LNG_SHIPMENT	GASBB3,GAS_LNG_SHIPMENT,1	New
	GAS_LNG_TRANSACTION	GASBB3_LNG_TRANSACTION	GASBB3,GAS_LNG_TRANSACTION,1	New
	GAS_RESERVES_AND_RESOURCES	GASBB3_RESERVES_AND_RESOURCES	GASBB3,GAS_RESERVES_AND_RESOURCES,1	New
	GAS_SHIPPER_LIST	GASBB3_SHIPPER_LIST	GASBB3,GAS_SHIPPER_LIST,1	New
	GAS_SHORT_TERM_TRANS	GASBB3_SHORT_TERM_TRANS	GASBB3,GAS_SHORT_TERM_TRANS,1	New
	GAS_SHORT_TERM_SWAP_TRANS	GASBB3_SHORT_TERM_SWAP_TRANS	GASBB3,GAS_SHORT_TERM_SWAP_TRANS,1	New
	GAS_STORAGE_CAPACITY_TRANS	GASBB3_STORAGE_CAPACITY_TRANS	GASBB3,GAS_STORAGE_CAPACITY_TRANS,1	New
	GAS_GSH_TRADES	GASBB3_GSH_TRADES	GASBB3,GAS_GSH_TRADES,1	New

Package Name	Gas Data Model table	File ID	CSV report type	Change
	GAS_DAILY_STORAGE_ACTUAL	GASBB3_DAILY_STORAGE_ACTUAL	GASBB3,GAS_DAILY_STORAGE_ACTUAL,2	Modified
	GAS_FACILITY	GASBB3_FACILITY	GASBB3,GAS_FACILITY,2	Modified
	GAS_FACILITY_NODE_CONNECTION	GASBB3_FACILITY_NODE_TRK	GASBB3,GAS_FACILITY_NODE_CONNECTION,2	Modified
	GAS_PARTICIPANT_DETAIL	GASBB3_PARTICIPANT_DETAIL	GASBB3,GAS_PARTICIPANT_DETAIL,2	Modified

5.6 Discontinued reports

Gas Data Model table	File ID	CSV report type	Replaced by
GSH_TRADES	GSH_TRADE_SINGLE	GSH,GSH_TRADES,TRADES,3	GSH,GSH_TRADES,TRADES,4
GSH_TRADES	GSH_TRADE_RANGE	GSH,GSH_TRADES,TRADES,3	GSH,GSH_TRADES,TRADES,4

5.7 Non-functional changes

- Gas Data Model Report v2.2
- Gas Data Model Upgrade Report v2.2
- Gas Table to File to Report v2.2
- Market Data NEMweb
- Data Subscription
- Data Interchange Online Help



6 FAQs

TBC



7 Implementation

7.1 Transition

For details, see [Participant Impact](#).

7.2 Upgrading

You can upgrade your pre-production or production Data Model environments once you receive the Data Model scripts. Applying the scripts sets up the new Data Model structure on your local database. You receive the same data until the new versions of fields, files, and reports are released into pre-production or production and you update your subscriptions.

For help, see:

- [Upgrading your DI environments](#)
- [Updating your subscriptions](#)

7.3 Implications

To maintain systems in-line with AEMO's market systems, participants need to:

- Review and assess the impact on their market systems with respect to the changes implemented as part of this Release.
- Change their systems prior to the implementation of this Release.
- Schedule staff and resources to upgrade their market systems for the production implementation of this Release.

7.4 Risks

- No risks identified.



8 Terms

8.1 Rule terms

You can find the following terms defined in the [National Gas Rules \(NER\)](#) and the [Exchange Agreement and Guides](#):

Term	Term	Term
AEMO	Market Participants	Trader
AER	Monthly	Trading Margin
Business Day	Monthly product	Trading Participant
Delivery Netting	Physical Delivery	Trading Window
Delivery Period	Product	Transactions
D-n	Prudential Requirements	
Exchange	Reallocation	
Exchange Agreement	Registered Participant	
Gas Day	Settlements	

8.2 Glossary

Abbreviation/Term	Explanation
AEST	Australian Eastern Standard Time
BB	Bulletin Board
COAG	Council of Australian Governments
GBB	Gas Bulletin Board
GSOO	Gas Statement of Opportunities
GTM	Gas Transparency Measures
Data Interchange	A set of cooperating applications used to replicate data between AEMO's energy market systems and a participant's DBMS conforming to the Data Model.

Abbreviation/Term	Explanation
Data Model	The definition of the interface to participants for data published by AEMO.
Legacy File	<p>AEMO market system software releases support the Latest (n) and Legacy (n-1) integrations to AEMO's market systems, allowing maintenance of participant interfaces across the system implementation at the AEMO end</p> <p>AEMO refers to the previous version as the Legacy version, for example NETWORK_OUTAGE_LEGACY</p> <p>AEMO expects participants to complete the corresponding release implementation at their end, moving from Legacy to Latest. Once participants upgrade their systems to the latest release, there is no requirement to maintain the Legacy report subscriptions</p>
Markets Portal	Software, hardware, network, and related processes to implement the Energy market for Registered Participants. Requires access to MarketNet.
NGL	National Gas Law
NGR	National Gas Rules
Participant ID	Registered participant identifier
Release	Gas Data Model v2.2 - Technical Specification - September 2022
Release Dates	<p>Pre-production: Wednesday 14 September 2022</p> <p>Production: Wednesday 5 October 2022</p>
TBC	To be confirmed



9 References

Guide to AEMO's e-Hub APIs: Provides details about using AEMO's e-Hub as an interface to communicate information with AEMO. It assists Wholesale electricity and gas participants developing their own APIs.

Guide to User Rights Management: Assists participant administrators (PAs) to use the user rights management functions in the Markets Portal.

Guide to Information Systems: Information about AEMO's Market Systems.

9.1 GSH

Exchange Agreement and Guides: Guides, forms, and agreements relating to the operation of the Gas Supply Hub (GSH).

9.2 Prudentials

Information about GSH prudential support.

9.3 Data interchange and data model resources

9.3.1 About

Information about setting up a Data Interchange environment: Data Interchange Help > [About Data Interchange](#).

9.3.2 Help

- [Data interchange online help](#)

9.3.3 Software

You can find Data Interchange software in the following locations:

- Data Interchange Help > [Software Releases](#).

- Releases directory on the participant file share: FTP to 146.178.211.2 > Data Interchange, pdrBatcher, pdrLoader, or pdrMonitor.

9.3.4 Reports

- Data Interchange Help > [Data Model Reports](#).

9.3.5 Releases

- Data Interchange Help > [Release Documents](#).



10 Index

A

Auto-subscription, 10

C

continuing improvement of AEMO's IT systems, 7

D

Data Interchange software, 54

Data Subscription, 10

E

Existing GSH data model participants, 10

G

Guide to GSH Publishing Direct, 10

I

industry user group, 7

M

Market Systems User Group, 7

MSUG, 7

N

New GSH Data Model participants, 10

U

Updating your subscriptions, 51

Upgrading your DI environments, 51