

Frequency Contribution Factors Procedure Consultation



Briefing

3:00pm-4:00pm AEDT

4 Nov 2022



Welcome

Welcome & Introductions

- The purpose of this forum is to facilitate a Q&A session on the recently published consultation for the Frequency Contribution Factors Procedure.
- To support discussion during this forum, we ask all attendees to please raise their hand when they intend to speak and be respectful to others speaking.
- Please introduce yourself (name & organisation) before you speak.

We acknowledge the Traditional Owners of country throughout Australia and recognise their continuing connection to land, waters and culture.

We pay respect to their Elders past, present and emerging.

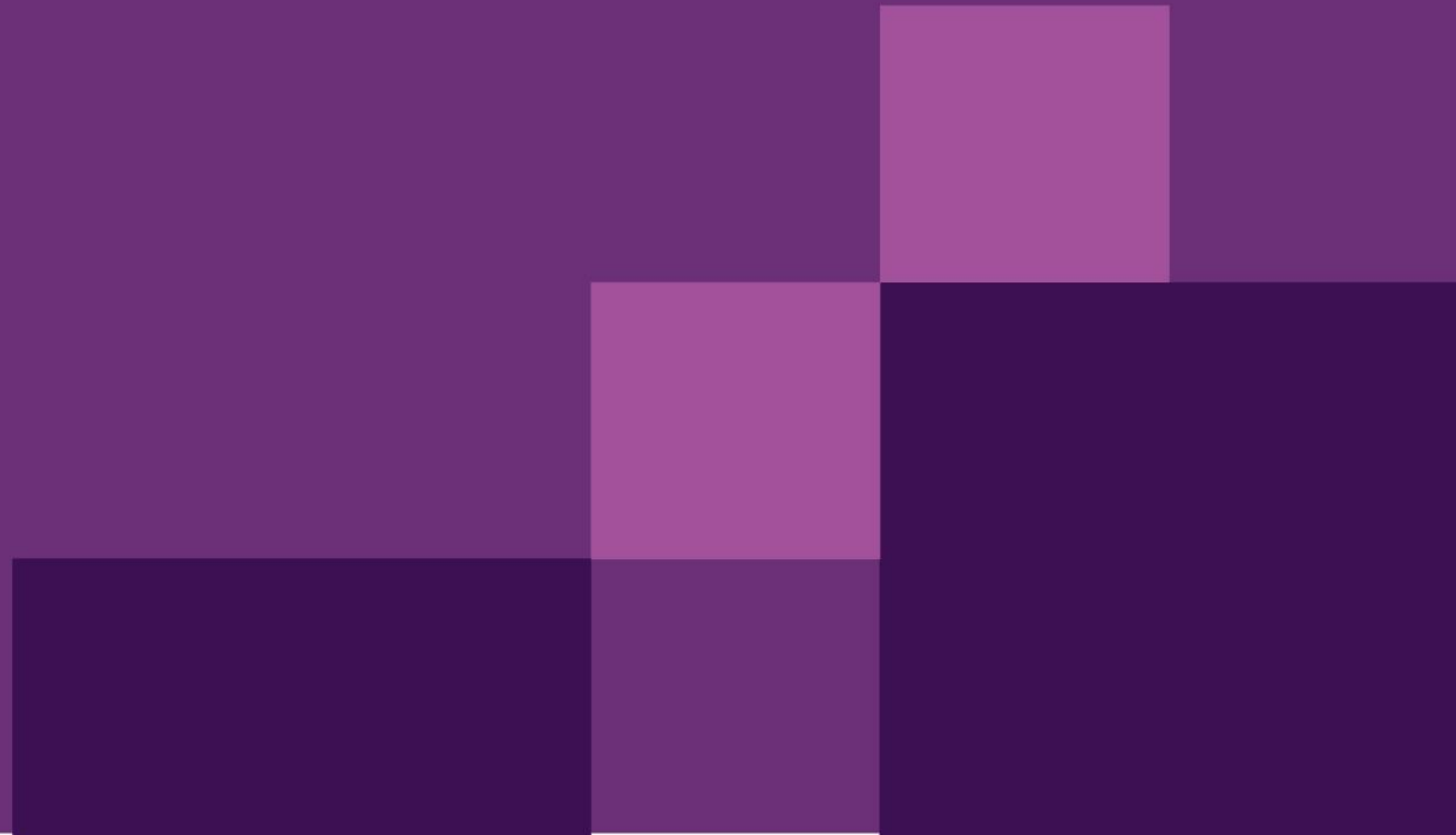
Agenda

| # | Time | Topic | Presenter(s) |
|---|--------|---|--------------------------------|
| 1 | 5 min | Welcome & Introductions | Hugh Ridgway |
| 2 | 10 min | Overview of consultation and additional issues | Hugh Ridgway/Shantha Ranatunga |
| 3 | 35 min | Q&A | |
| 4 | 5 min | Worked example | Shantha Ranatunga |
| 5 | 5 min | Thanks and close | Hugh Ridgway |



Please note that this forum will be recorded for the purposes of assisting AEMO accurately capturing feedback.

Overview



Consultation Objectives

Develop a procedure that:

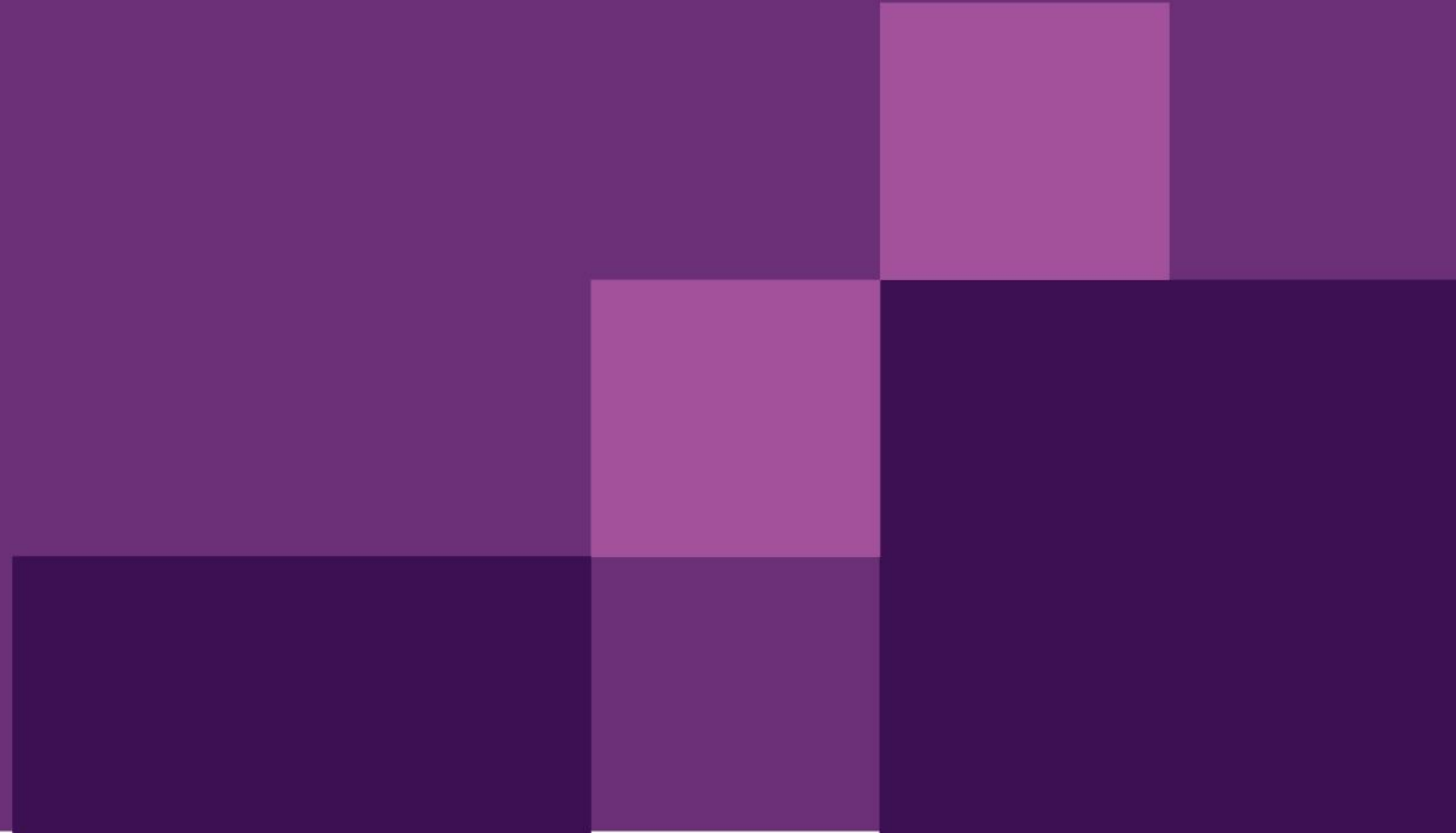
- Meets the requirements and is consistent with the principles of the NER as amended by the PFR incentives rule.
- Supports a system design that is practically implementable at a reasonable cost within the required timeframe and workable in conjunction with AEMO's broader NEM systems.
- As far as practicable, does not create unnecessary implementation complexity for established market participant systems.

Scope of Frequency Contribution Factors Procedure (FCFP)

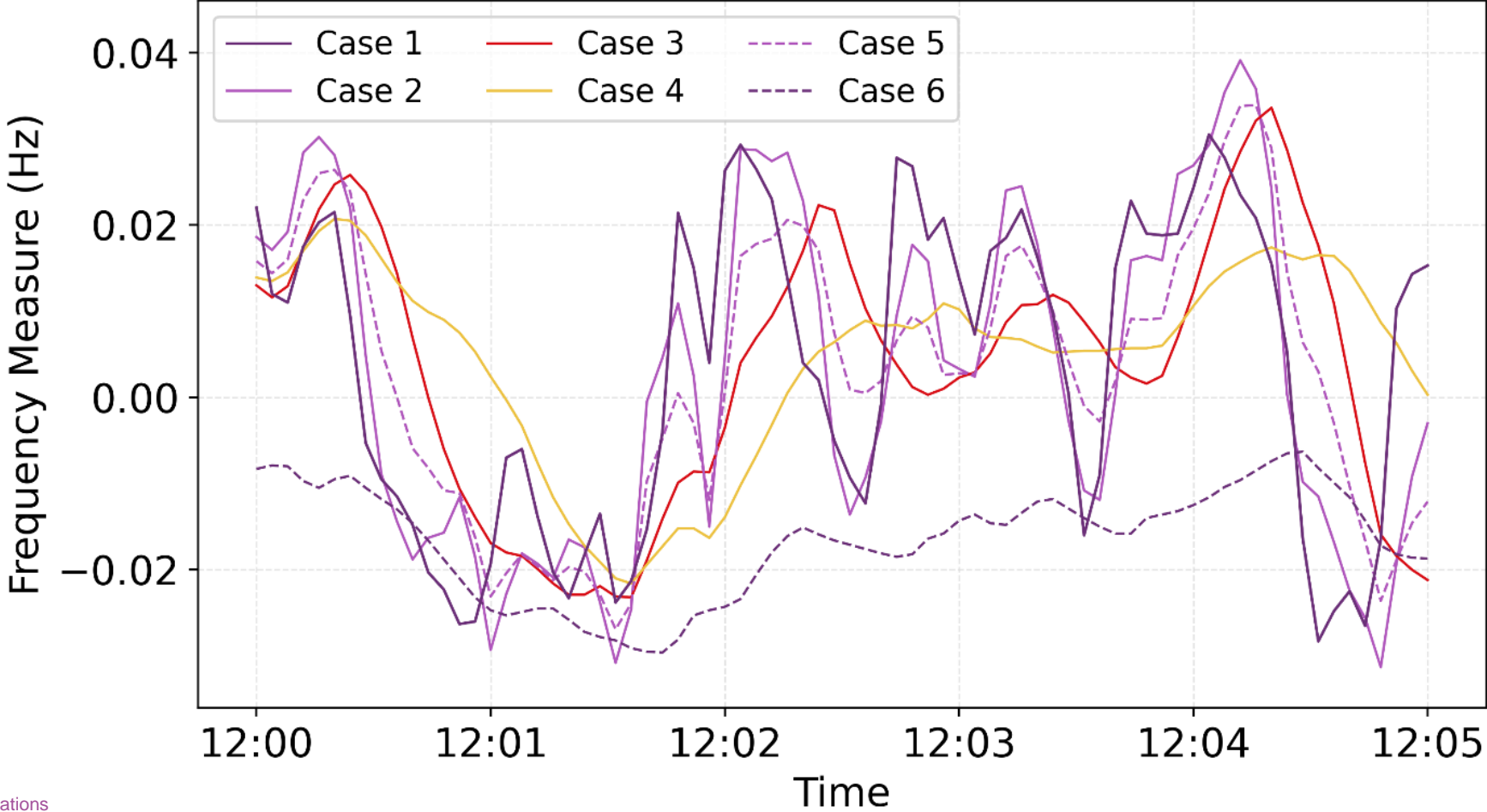
The FCFP must deal with the following matters:

- Criteria for metering
- Formulation of frequency measure (how to determine whether deviations are good or bad)
- Determination of contribution factors
- Determination of default contribution factors
- Formulation of requirement for corrective response
- Determination of 'usage' for regulation FCAS
- Reference trajectory definition

Issues

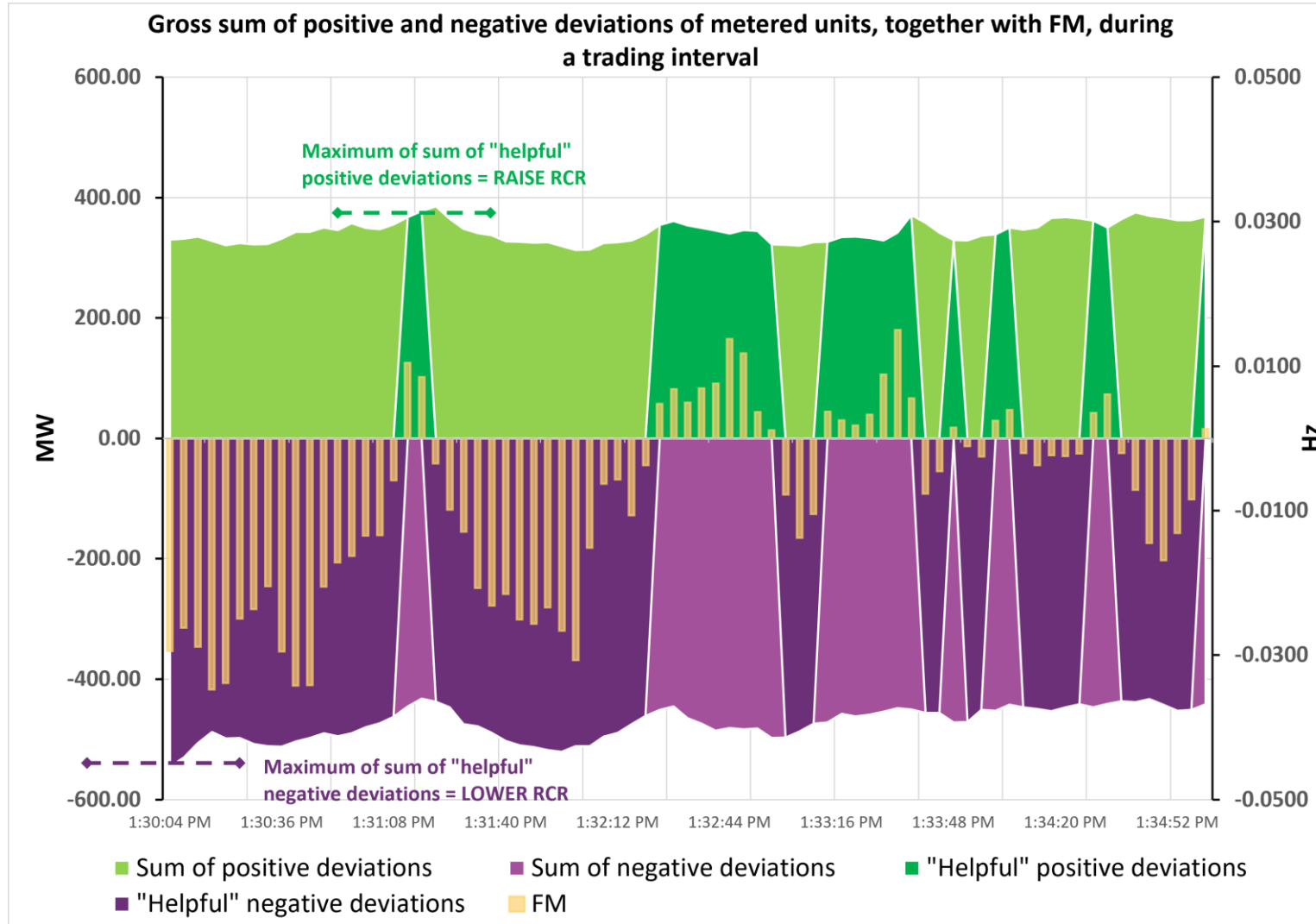


Frequency Measure Options

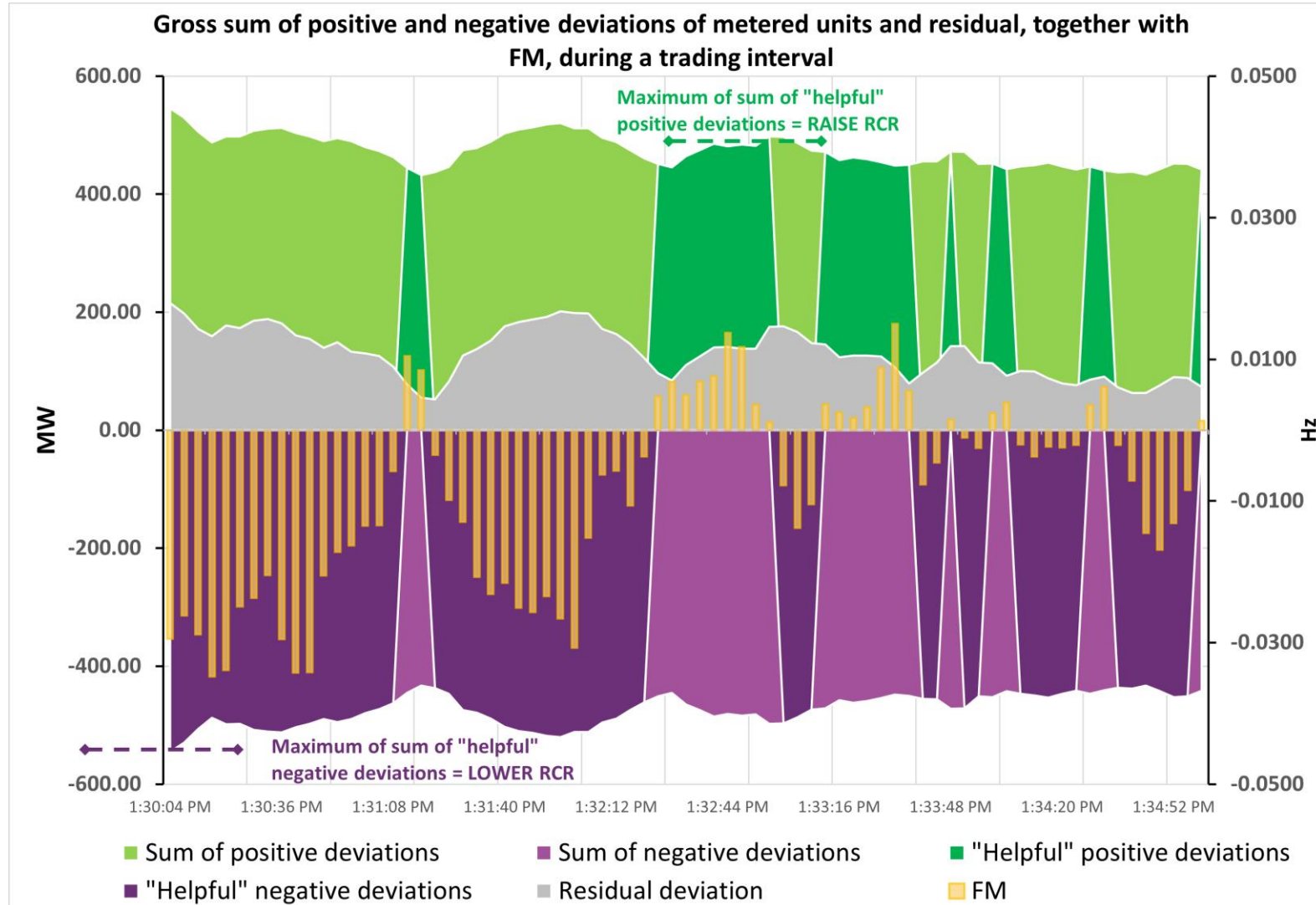


- Case 1: Frequency deviations
- Case 2: 12-second moving average of frequency deviations
- Case 3: 60-second moving average of frequency deviations
- Case 4: 120-second moving average of frequency deviations
- Case 5: Average of 12-second and 60-second moving average of frequency deviations
- Case 6: Scaled Frequency Indicator (FI), used in the current Causer Pays procedure

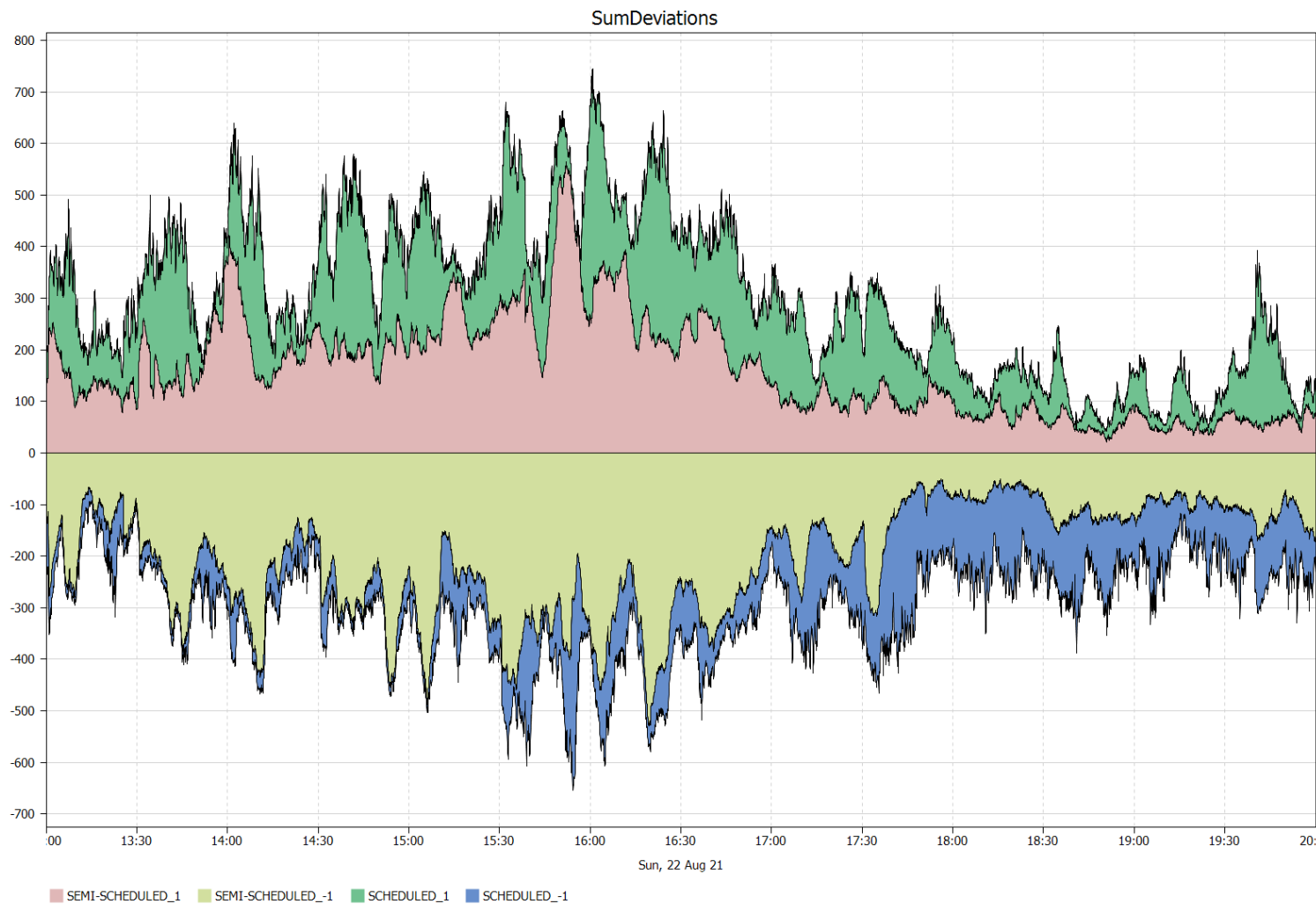
RCR – exclusion of residual



RCR – inclusion of residual

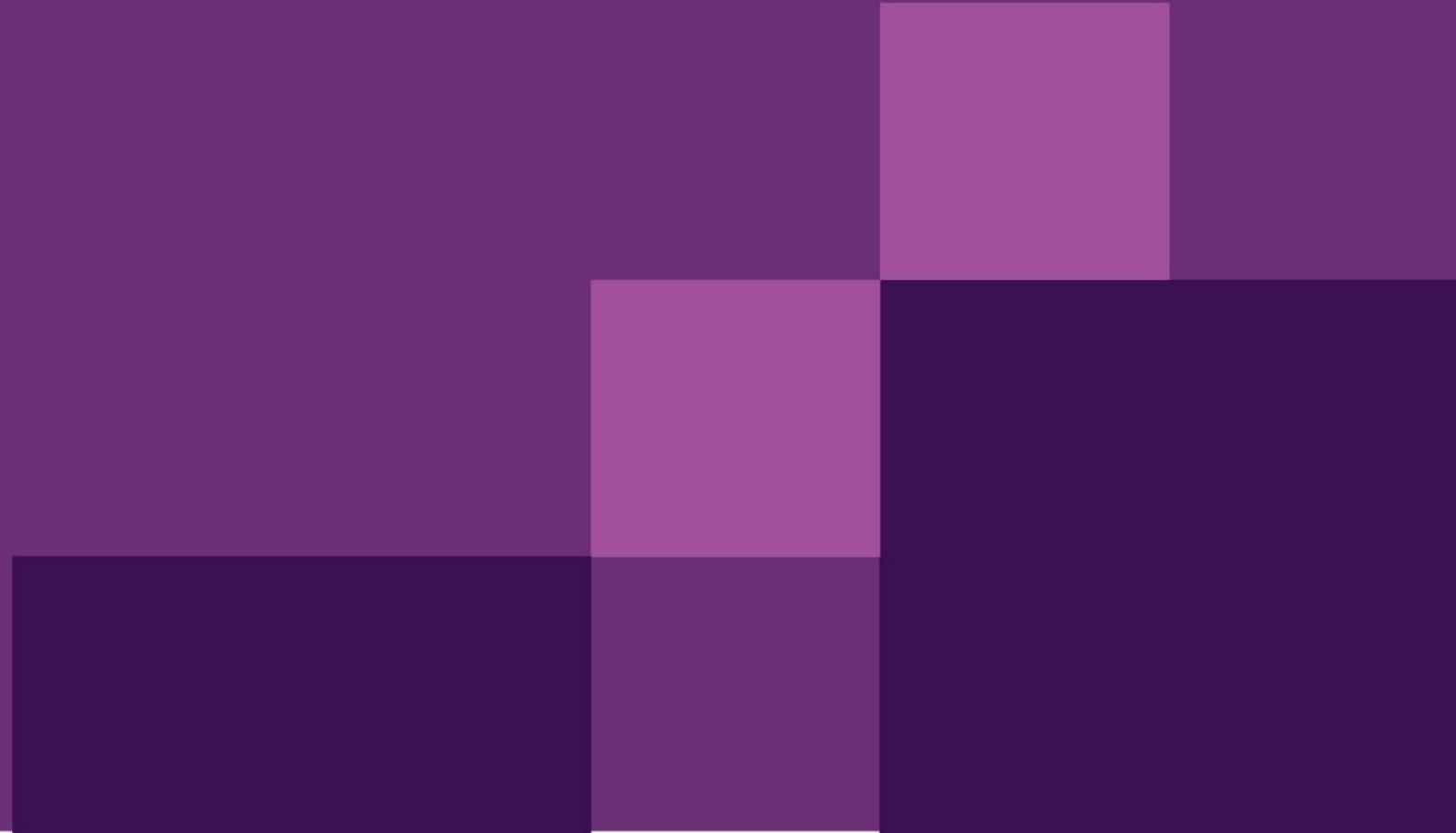


RCR – semi-scheduled deviations





Q&A



Worked Example





For more information visit

aemo.com.au

<https://aemo.com.au/consultations/current-and-closed-consultations/frequency-contribution-factors-procedure>